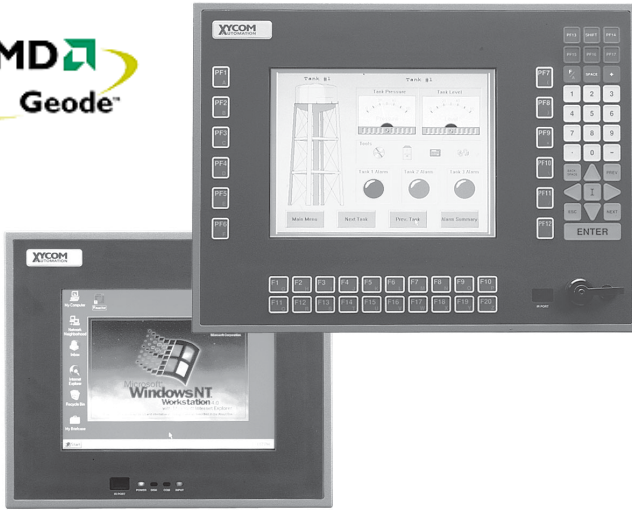


3300 Series Heavy-Duty Flat Panel Industrial PCs

DS-330001(C)



Xycom Automation's open solutions connect to other automation standards with Industrial PCs that are more than tough enough for plant floor use. (Our standard PC configurations meet the strict specifications for use in Hazardous Locations and Europe's CE mark.) Based on CPU boards designed specifically for industrial automation, our systems provide the capabilities required by demanding applications. With an installed base of 200,000 systems, these Industrial PC products are successfully applied in manufacturing and continuous process environments.

- ### FEATURES
- Preloaded with MS-DOS, Windows® NT, Windows® 2000, or Windows CE.net (4.2) operating system
 - Built-in 10/100 BaseT Ethernet port
 - PC/104 expansion (up to two standard cards)
 - 8.4" to 12.1" flat panel color displays
 - Choice of operator input options:
 - Analog resistive touchscreen only, or
 - Reprogrammable keypad with integrated mouse, or
 - Combination of keypad, mouse and touchscreen
 - AMD Geode GX1 300 MHz processor
 - Up to 256 MB DRAM (128 MB standard)
 - Externally accessible CompactFlash™ site (Type I/II CompactFlash card)
 - Floppy drive option
 - 20.0 GB (or larger) hard drive
 - CompactFlash™ (up to 256 MB internal) and solid state drive options
 - Parallel, RS-232 and RS-232 or RS-485, PS/2 mouse and keyboard ports
 - Two USB ports (1.1 compliant)
 - NEMA 4/4X/12 and IP65 front panel
 - UL listed for hazardous locations: Class I, Division 2, Groups A, B, C, D; Class II, Division 2, Groups F and G; Temp. Code: T4A
 - 2-year warranty included

Easy-to-Read, Sharp Displays

We offer a range of displays from 8.4" VGA to 12.1" SVGA displays. An optional analog resistive touch screen provides a flexible, easy-to-use interface for operator input. The keypad option maximizes display space and provides legend and keycode flexibility.

Meets High Standards

To survive on the plant floor, our Industrial PCs meet NEMA 4/4x/12 front panel, FCC, UL, and European CE mark requirements. Xycom Automation also leads the industry in reliability, service, and support, with an optional five year warranty, unmatched in the industry.

Open Platform

Built-in Ethernet allows you to connect Xycom Automation PCs to networks at startup with little effort. With a preloaded Windows operating system, you can communicate locally or with Ethernet connected products and databases through Microsoft and other enabling technologies—including ActiveX, OPC, and standard DDE. Xycom Automation open platform allows you to exchange plant floor data with office applications, and to see what is happening from the plant floor to corporate headquarters.

Fits Your Needs

You can configure and reconfigure Xycom Automation's Industrial PCs to fit nearly any application through a wide variety of standard technologies. Our Industrial PCs make it easy for end users and vendors to use cost-effective, industry-standard components, storage options, PC/104 expansion, and programmable keypads for application-specific requirements.



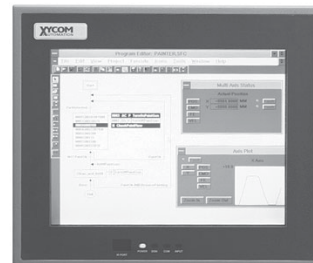
PRODUCT CONFIGURATIONS



Model	3308KP	3308T
Display	8.4" flat panel color display, 640 x 480 (VGA)	8.4" flat panel color display, 640 x 480 (VGA)
Operator Input	51-position keypad	Analog resistive touchscreen
Preloaded OS	MS-DOS, Windows® NT Windows® 2000, Windows CE 4.2	MS-DOS, Windows® NT Windows® 2000, Windows CE 4.2
Ethernet	Built-in 10/100 BaseT	Built-in 10/100 BaseT
Expansion	PC/104 expansion (up to two cards)	PC/104 expansion (up to two cards)



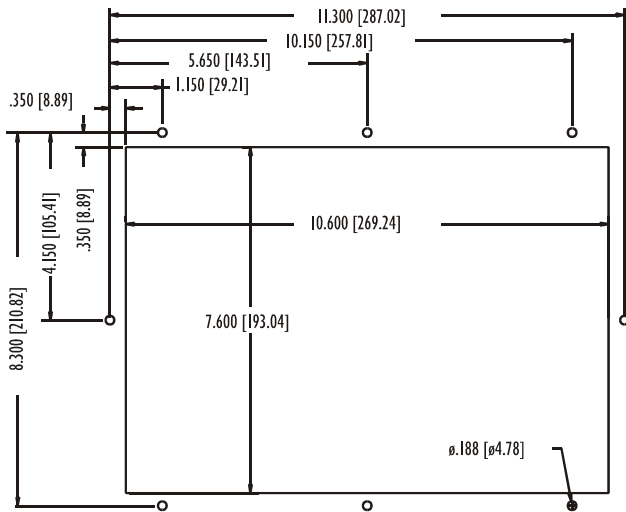
Model	3310KP(T)	3310T
Display	10.4" flat panel color display, 640 x 480 (VGA)	10.4" flat panel color display, 640 x 480 (VGA)
Operator Input	63-position keypad (touchscreen option)	Analog resistive touchscreen
Preloaded OS	MS-DOS, Windows NT® Windows® 2000, Windows CE 4.2	MS-DOS, Window NT® Windows® 2000, Windows CE 4.2
Ethernet	Built-in 10/100 BaseT	Built-in 10/100 BaseT
Expansion	PC/104 expansion (up to two cards)	PC/104 expansion (up to two cards)



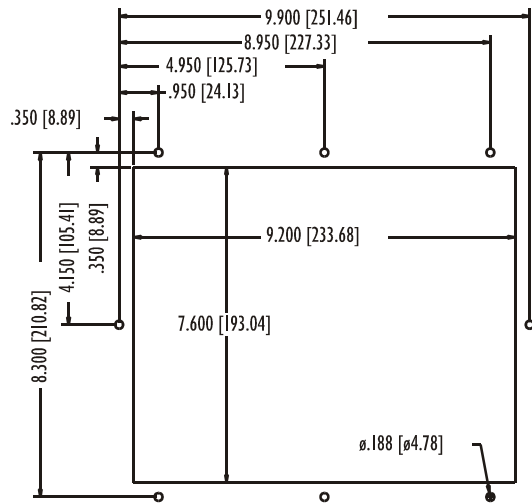
Model	3312KP(T)	3312T
Display	12.1" flat panel color display, 800 x 600 (SVGA)	12.1" flat panel color display, 800 x 600 (SVGA)
Operator Input	63-position keypad (touchscreen option)	Analog resistive touchscreen
Floppy Drive	Option	Option
Preloaded OS	MS-DOS, Windows NT® Windows® 2000, Windows CE 4.2	MS-DOS, Window NT® Windows® 2000, Windows CE 4.2
Ethernet	Built-in 10/100 BaseT	Built-in 10/100 BaseT
Expansion	PC/104 expansion (up to two cards)	PC/104 expansion (up to two cards)

PRODUCT AND MOUNTING DIMENSIONS

3308KP Mounting



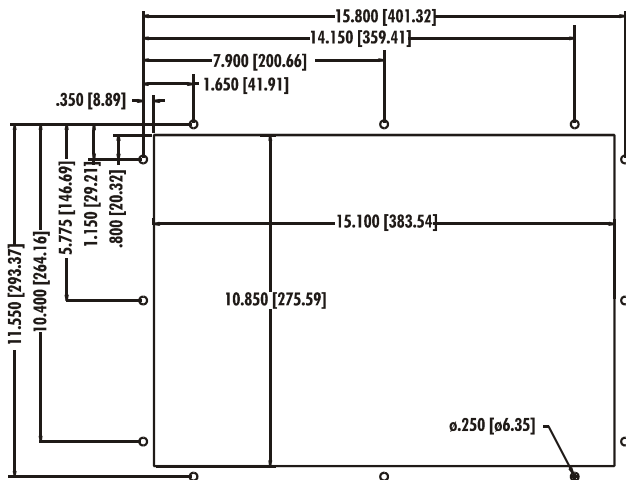
3308T Mounting



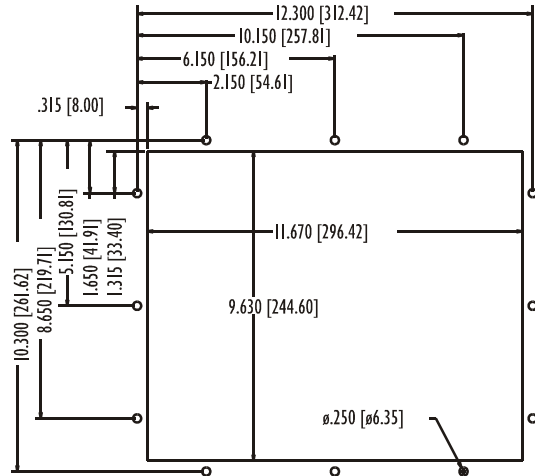
3308 Unit Dimensions

Model	3308KP	3308T
Height	9.00" (228.6 mm)	9.00" (228.6 mm)
Width	12.00" (304.8 mm)	10.60" (269.2 mm)
Depth	4.30" (109.2 mm)	4.20" (106.7 mm)
Mounting Depth	3.30" (83.8 mm)	3.20" (81.3 mm)
Weight	9 lbs (4.1 kg)	9 lbs (4.1 kg)

3310KP(T) Mounting



3310T Mounting

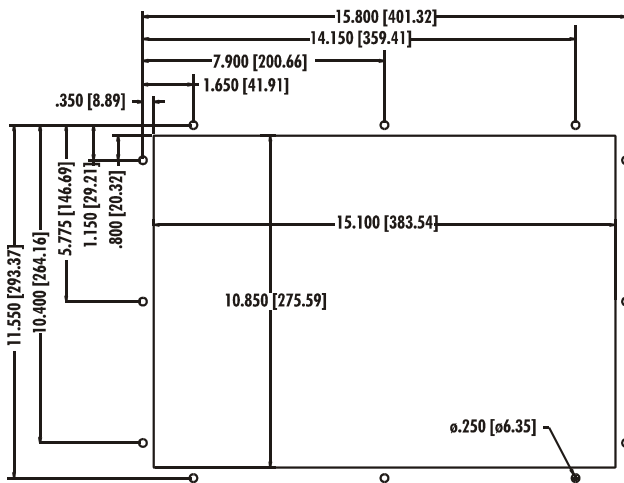


3310 Unit Dimensions

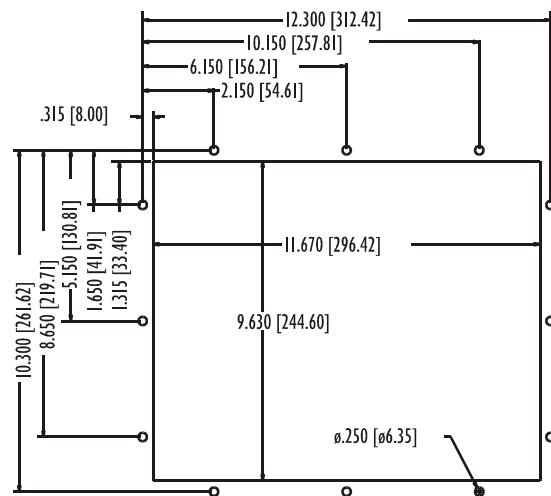
Model	3310KP(T)	3310T
Height	12.25" (311.5 mm)	11.00" (279.4 mm)
Width	16.50" (419.1 mm)	13.00" (330.2 mm)
Depth	4.50" (114.3 mm)	4.50" (114.3 mm)
Mounting Depth	3.50" (88.9 mm)	3.50" (88.9 mm)
Weight	12 lbs (5.5 kg)	11 lbs (5.0 kg)

PRODUCT AND MOUNTING DIMENSIONS

3312KP(T) Mounting



3312T Mounting



3312 Unit Dimensions

Model	3312KP(T)	3312T
Height	12.25" (311.5 mm)	11.00" (279.4 mm)
Width	16.50" (419.1 mm)	13.00" (330.2 mm)
Depth	4.50" (114.3 mm)	4.50" (114.3 mm)
Mounting Depth	3.50" (88.9 mm)	3.50" (88.9 mm)
Weight	12 lbs (5.5 kg)	11 lbs (5.0 kg)

All dimensions are in inches [millimeters]

PRODUCT SPECIFICATIONS AND RATINGS

Environmental

	Operating	Nonoperating
Thermal	0°C to 50°C	-20°C to 60°C
Humidity	20% to 80% RH, noncondensing	5% to 95% RH, noncondensing
Shock ^a	15g peak acceleration, 11 msec duration	30g peak acceleration, 11 msec duration
Vibration	.006" peak to peak displacement	.015" peak to peak displacement
5-2000 Hz ^a	1.0g maximum acceleration	2.5g maximum acceleration
Altitude ^b	Sea level to 10,000 ft.	Sea level to 40,000 ft.

^a These values are with solid state hard drives and not rotating media drives.

^b Consistent with internal component specifications.

Electrical

Model	3308	3310	3312
Power Supply	40 Watt power	40 Watt power	40 Watt power
AC Power	100-240V AC, 50-60 Hz, 1A (maximum), 22 W nominal ^c	100-240V AC, 50-60 Hz, 1A (maximum), 24 W nominal ^c	100-240V AC, 50-60 Hz, 1A (maximum), 28 W nominal ^c
DC Power (option)	18-30V DC, 24V nominal, 3.6A (maximum), 22 W nominal ^c	18-30V DC, 24V nominal, 3.6A (maximum), 24 W nominal ^c	18-30V DC, 24V nominal, 3.6A (maximum), 28 W nominal ^c
Power Available for Expansion (all models)	+5V@2A +12V@1A -12V@0.4A		

^c Nominal Power is measured for a base configuration only. Any additional expansion and/or devices will increase the input power required.

PRODUCT SPECIFICATIONS AND RATINGS (CONT'D)

Regulatory Compliance

CE

- EN 55022
- EN 61000-6-2
- EN 61000-3-2, Class A
- EN 61000-3-3
- IEC 60950-1

FCC

- 47 CFR, Part 15, Class A
- ICES-003, Class A

Safety Agency Approvals

UL:

- UL 508 Listed
- UL 1604 Listed ^a

cUL:

- CSA-C22.2, #142 Listed
- CSA-C22.2, #213 Listed ^a

Front Panel

- NEMA 4/4X/12 and IP65



^aClass I Division 2, Groups A, B, C, D; Class II, Division 2, Groups F and G; Temp. Code: T4A

ORDERING INFORMATION

To create an order number, follow the conventions defined by the example order numbers and product configurations.

Example Order Number: 3300 Series Industrial PCs

Order Number	Description
3308(T or KP)-300-128	3308 series workstation with 8.4" color display, analog resistive touch screen or keypad, 128 MB DRAM, MS-DOS preloaded, AC power supply, 20 GB hard drive.

33 - 300	
Color Flat Panel Display and Operator Input	
08T	8.4" VGA display with touchscreen
08KP	8.4" VGA display with keypad
10T	10.4" VGA display with touchscreen
10KP	10.4" VGA display with keypad
10KPT	10.4" VGA display with keypad and touchscreen
12T	12.1" SVGA display with touchscreen
12KP	12.1" SVGA display with keypad
12KPT	12.1" SVGA display with keypad and touchscreen
DRAM	
-128	128 MB DRAM
-256	256 MB DRAM
Power Supply	
blank	AC power supply
-24V	24V DC power supply
Floppy Drive	
blank	No floppy
-F	External floppy drive installed
Internal Hard Drive	
blank	20 GB hard drive
-128M	128 MB CompactFlash drive (Internal) ^a
-256M	256 MB CompactFlash drive (Internal) ^a
-3GSS	3 GB solid state hard drive ^b
Operating System	
blank	MS-DOS
-NT	Windows NT
-2K	Windows 2000 (multi-language)

^aAvailable for MS-DOS only ^bNot recommended when applications are storing data

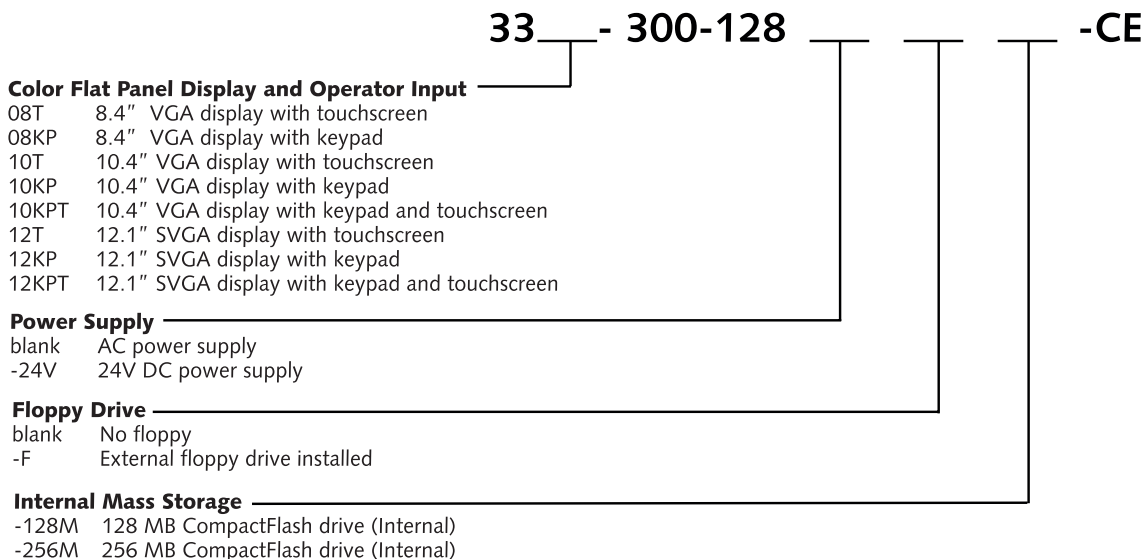
Warranty Information

The 3300 series carries a two-year parts & labor warranty.

ORDERING INFORMATION (CONTINUED)

Example Order Number: 3300 Series Windows CE-based Workstations

Order Number	Description
3308(T or KP)-300-128-128M-CE	3308 workstation with 8.4" color display, analog resistive touch screen or keypad, 300 MHz AMD Geode GXI CPU, 128 MB DRAM, 128 MB CompactFlash™, Windows® CE 4.2 operating system, AC power supply.



Warranty Information
The 3300-CE series carries a two-year parts & labor warranty.

Accessories

Order Number	Description
3300-SDK01	Windows CE 4.2 software development kit (SDK). Includes 10 ft. serial cable.

Xycom Automation, Inc.
750 North Maple Rd.
Saline, MI 48176-1292
Phone: 734-429-4971
Fax: 734-429-1010
<http://www.xycom.com>

Customer Support Hotline:
734-944-0482

