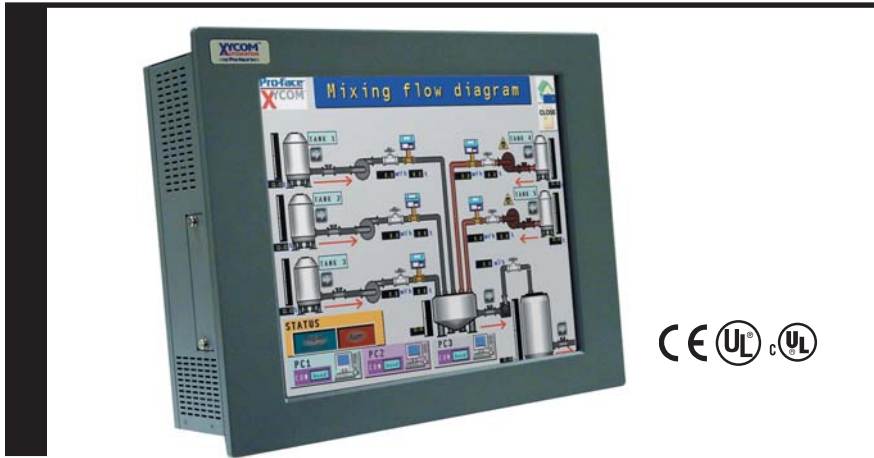


# 4117T Light-Duty Flat Panel Industrial PC

with Integrated 17.0" LCD Displays

DS-411700(A)



Ycom Automation industrial computers (IPCs) are designed to provide processing power and versatility. The 4117T IPC offers a powerful processor with a wide range of features and an expansion slot. The 4117T also meets the rigorous requirements of the plant floor with a high-resolution LCD flat panel display in a rugged housing ideal for today's manufacturing environment.

## High Performance, Lower Power

The 4117T utilizes an Intel mobile processor providing superior processing power while utilizing half the wattage of a comparable Pentium 4 processor. The Pentium M 1.4 GHz processor outperforms the desktop Pentium 4 2.0 GHz used in the 4115T while utilizing less wattage. The increased processing power with less heat generation makes the 4117T ideal for most factory automation applications requiring a NEMA enclosure. Less wattage input into the system results in less temperature rise in the enclosure. With less temperature rise the maximum ambient operating temperature is more easily maintained, possibly without the need for expensive enclosure cooling devices.

## Easy-to-Read Display

- The 4117T incorporates a bright 17.0" LCD with SXGA (1280 x 1024) resolution and an analog resistive touchscreen into a thin light-duty industrial PC. The on-board 4X AGP graphics controller provides full color resolution when displaying a 1280 x 1024 application screen.

## Full compliment of I/O Ports

- The 4117T comes standard with an extensive array of I/O ports (see photo below), including three high speed RS-232 ports, one parallel port, 2 USB 2.0 compliant ports, PS/2 mouse & keyboard ports, one 10/100 & one 10/100/1000 Mbps Base-T Ethernet ports, one VGA

**FEATURES**

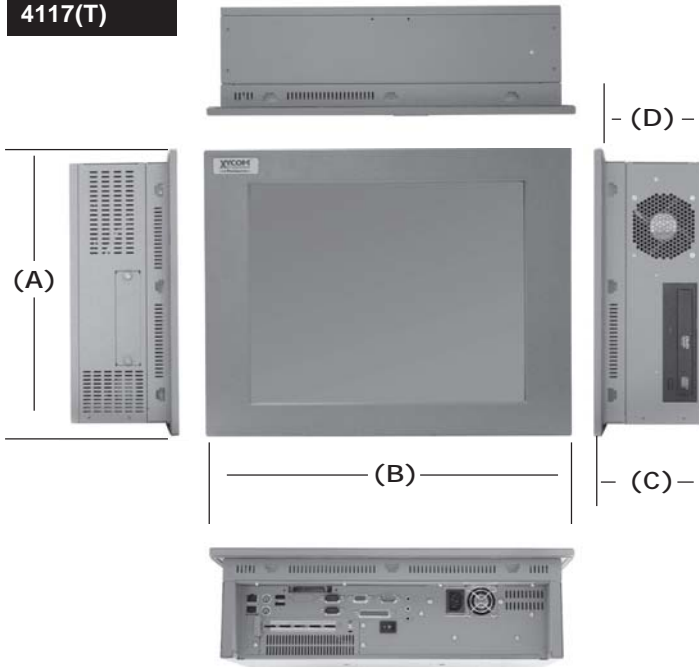
- 17" SXGA (1280 x 1024) color flat panel display
- Analog Resistive Touchscreen
- Intel® Pentium® M 1.4 GHz CPU, w/ 2M Cache, 400 MHz system bus
- 4X AGP Video Controller
- 512 MB DRAM (up to 2 GB optional)
- VGA port for remote monitor
  - Supports using remote monitor and built-in display simultaneously
- Preloaded with Windows® XP operating system (Windows 2000 optional)
- One half-length PCI expansion slot
- 80 GB Internal IDE Hard Drive
- Side access CD-R/W w/ DVD Read capability (optional DVD-R/W drive)
- Type I/II CompactFlash™ card slot
- 3 RS-232 ports
- Parallel port
- Two USB 2.0 ports, Audio (in/out/mic)
- 10/100 and 10/100/1000 Base-T Ethernet ports
- Audio input/output/mic
- PS/2 keyboard & mouse ports
- Mounted with mounting clips or standard 100 mm VESA arm
- 100-240 VAC power supply
- UL, cUL, and CE approvals
- RoHS compliant
- NEMA 4/4X/12, IP65 front panel
- 1-year warranty

- port, and audio ports (in/out/mic). In addition a half-length PCI and Type I/II CompactFlash card can also be added to even further enhance your I/O needs.
- The VGA port can be utilized to connect a VGA monitor. The built-in display and an additional monitor can be utilized simultaneously (both showing the same image).



## PRODUCT DIMENSIONS AND CONFIGURATIONS

4117(T)



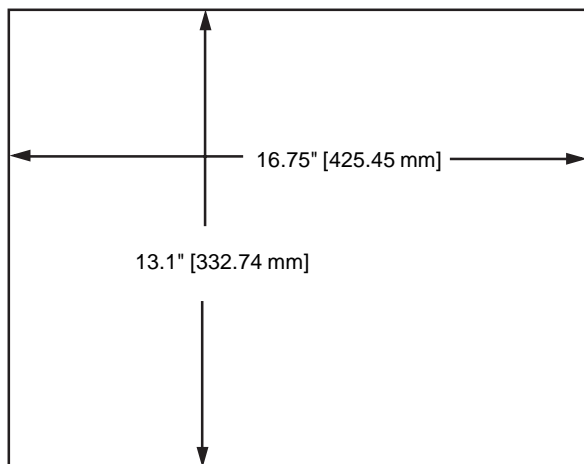
### 4117T Unit Dimensions

Model	4117T
Height (A)	14.0" (355.6 mm)
Width (B)	17.8" (452.1 mm)
Depth (C)	5.32" (135.1 mm)
Mounting Depth (D)	4.93" (125.2 mm)
Weight	29 lbs (13.15 kg)

### 4117T Unit Configuration

Model	4117T
Display	17" LCD color display, 1280 x 1024 (SXGA)
Operator Input	Analog resistive touchscreen
Processor	Intel® Pentium M 1.4 GHz CPU, w/ 2M Cache, 400 MHz system bus
Preloaded OS	Windows® XP, Windows® 2000, or None
Expansion	One half-length PCI expansion slot

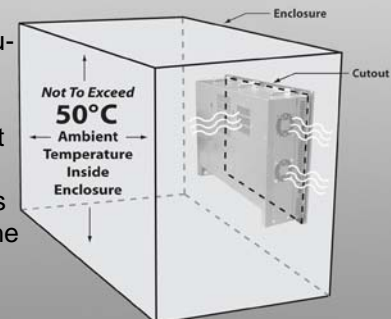
## MOUNTING DIMENSIONS AND TEMPERATURE SPECIFICATIONS



### Temperature Specifications

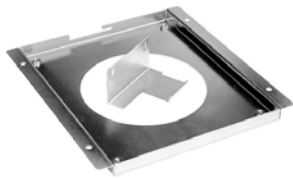
When installing your 4117T into an enclosure, extra care should be exercised to ensure that the ambient air around the unit (inside your enclosure, not outside the enclosure) does not exceed 50°C. Exceeding 50°C may cause premature degeneration of the unit.

Even though the 4117T utilizes a lower wattage Pentium M processor than the Pentium 4 based 4115T care still needs to be exercised when installing the 4117T into an undersized enclosure. Consult your enclosure manufacturer for proper sizing and/or cooling options. The product specifications and ratings section of this datasheet contains the information your enclosure manufacturer will require.



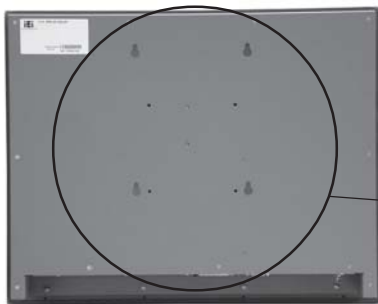
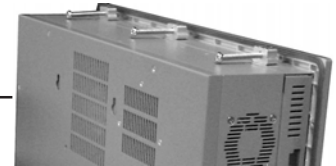
## MOUNTING OPTIONS

The 4117T is designed to be mounted directly into an equipment panel without requiring special mounting plates or brackets. It can also be mounted on a wall with the wall-mount adapter included in the mounting kit or it can be mounted on a standard 100 mm VESA swing or pendent arm. The 4117T is not NEMA rated if mounted outside of a panel.



Wall Mount Bracket

Panel Mounting Clips



Wall Mount Pattern (x4)

100 mm VESA Arm

## PRODUCT SPECIFICATIONS

### *Environmental*

	Operating	Nonoperating
<b>Thermal</b>	0°C to 50°C (32° TO 122°F)	-20°C to 60°C (-4° to 140°F)
<b>Humidity</b>	20% to 80% RH, noncondensing	20% to 80% RH, noncondensing
<b>Shock <sup>a</sup></b>	15g peak acceleration, 11 msec duration	30g peak acceleration, 11 msec duration
<b>Vibration 5-2000 Hz</b>	0.006" peak to peak displacement 1.0g maximum acceleration	0,015" peak to peak displacement 2.5g maximum acceleration
<b>Altitude <sup>b</sup></b>	Sea level to 10,000 ft. (3,000 m)	Sea level to 40,000 ft. (12,000 m)

<sup>a</sup> These values are with solid state hard drives and not rotating media drives.

<sup>b</sup> Consistent with internal component specifications.

### *Electrical*

<b>AC Power</b>	200 Watt AC, 100-240 VAC, 1.0 Amp, 50-60 Hz, 95 Watts nominal power <sup>†</sup> ,
-----------------	--

<sup>†</sup> Nominal power is measured for a base configuration only. Any additional expansion and/or devices will increase the input power required.

## PRODUCT RATINGS

### Compliance

#### Regulatory Compliance

##### CE

- EN 55022: Class A
- EN 61000-6-2
- EN 61000-3-2, Class A
- EN 61000-3-3
- IEC 60950-1

##### FCC

- 47 CFR, Part 15, Class A

#### Safety Agency Approvals

##### UL

- UL 508 Listed

##### CUL

- CSA-C22.2, #142 Listed

#### RoHS compliant

#### Front Panel

- NEMA 4/4X/12, IP65



Product certification documentation available at:  
[www.xycom.com/certifications](http://www.xycom.com/certifications)

## ORDERING INFORMATION

### Example Order Number

Order Number	Description
<b>4117T-1400-512-CDW-XP</b>	4117T Light-Duty Flat Panel Industrial PC with a Intel® Pentium® M 1.4 GHz CPU, 2M cache, 400 MHz system bus, 512 MB DRAM, 80 GB hard drive, CD-R/W (w/ DVD Read Only capabilities), and Windows XP operating system.

### 4117T - 1400

#### Display

Screen 17", SXGA (1280 x 1024)

#### Memory

-512 512 MB DRAM  
-1000 1 GB DRAM  
-2000 2 GB DRAM

#### Rotating Media <sup>a</sup>

-CDW CD-R/W w/ DVD Read  
-DVDW DVD-R/W Drive

#### Operating System

-XP Windows XP Professional  
-2K Windows 2000 Professional  
-NOS No operating system installed <sup>a</sup>

<sup>a</sup> When ordering no operating system, all required drivers will not be loaded and devices may not function properly.

Important Notice for XP configurations: Certain Microsoft® software product(s) included with this computer may use technological measures for copy protection. IN SUCH EVENT, YOU WILL NOT BE ABLE TO USE THE PRODUCT IF YOU DO NOT FULLY COMPLY WITH THE PRODUCT ACTIVATION PROCEDURES. Product activation procedures and Microsoft's privacy policy will be detailed during initial launch of the product, or upon certain reinstallations of the software product(s) or reconfigurations of this computer, or may be completed by Internet or telephone (toll charges may apply).

### Warranty Information

The 4117T carries  
a one-year parts  
& labor warranty.

**Xycom Automation**  
734-429-4971  
Fax: 734-429-1010  
<http://www.xycom.com>

**Customer Support Hotline:**  
734-944-0482



© 2006 Xycom Automation, LLC. Specifications may change without notice.  
Xycom Automation is a trademark of Xycom Automation. Other brand or product names are the property of their respective owners.